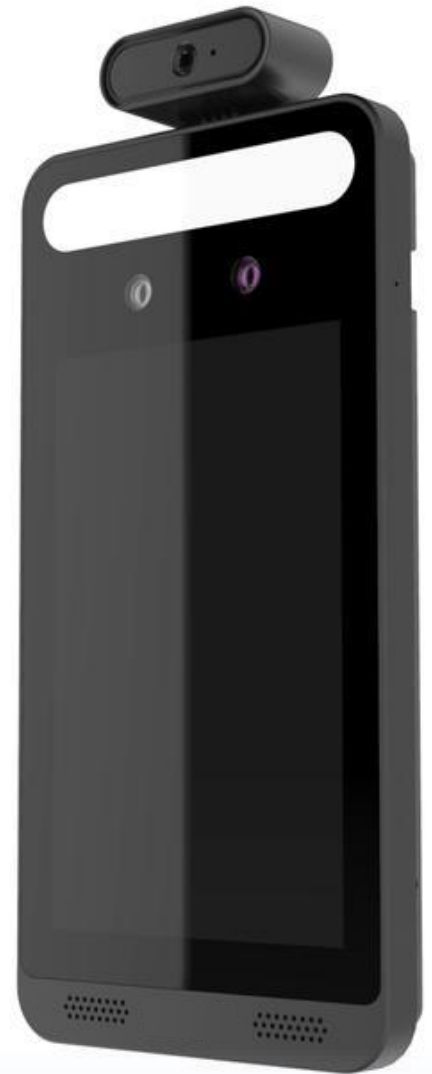


TEMPERATURE KIOSK

Our Temperature Kiosk provides the ability to screen employees and guests via an infrared body temperature camera. The solution can also be programmed for facial identification, with users easily added in a few short clicks. Designed to help protect the health and safety of both employees and guests by preventing anyone with a temperature from entering a facility. Alarms can be added to sound when those above the temperature threshold and those without access attempt to enter.



- Email notification
- Pass or Fail visual and audio alerts
- 2 megapixel camera
- Facial recognition library up to 20,000 people
- Temperature accuracy $\pm (.54^{\circ}\text{F}) 0.3^{\circ}\text{C}$
- Temperature range $89.6^{\circ}\sim 109.4^{\circ}\text{ F } (32^{\circ}\sim 43^{\circ}\text{C})$

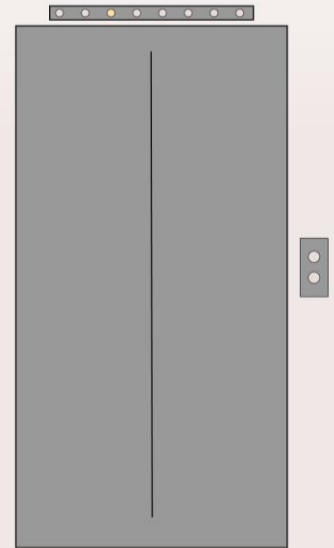
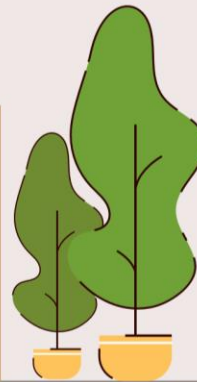
TEMPERATURE KIOSK

Temperature Tablet

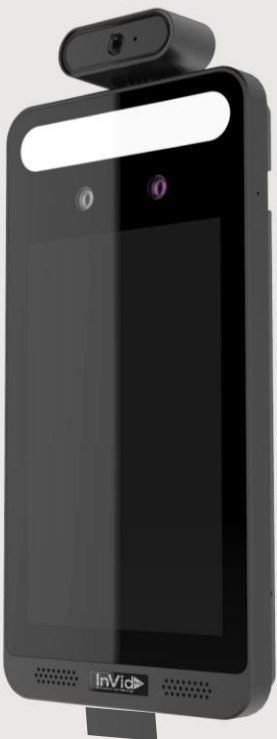
98.6°F



RECEPTION



Temperature & Face Recognition Tablet for Individual Scanning & Access



PAR-P2TFMPTARI FT

- 8 inch LCD screen
- Accurate within 0.54°F
- 20,000 Faces
- Face Mask Detection
- Multiple Notification Options
- Integrates with Access Control



MULTIPLE NOTIFICATION OPTIONS
Can detect if a Mask is not being worn & Deny Access based on configuration

MOUNTING OPTIONS

For Use with the PAR-P2TEMPTABLET

IPM-TABLETDESK
De



IPM-TABLETPED
S



IPM-TABLETURN
Tu



Lake Business Products is introducing a new product to measure an individual's temperature. The tablet can accurately read the temperature of a single person with an accuracy of $\pm 0.54^\circ\text{F}$. You can customize the system to alert you when anyone passes through whose temperature is above the threshold set.

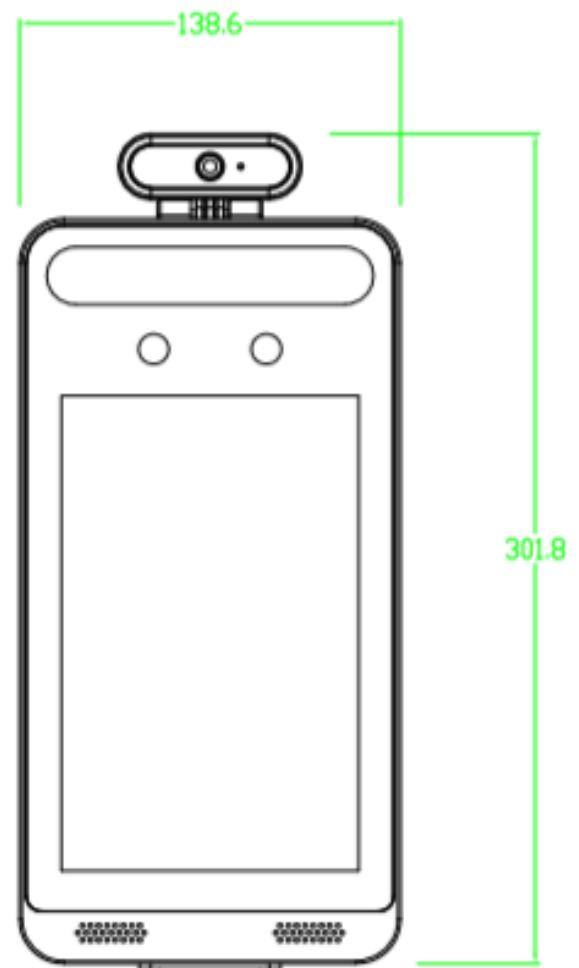
This product offers individual temperature readings at a short-range distance of about 1-1.5 feet. The short-range measuring distance prevents the need for constant calibration. It can also do facial recognition at a more extended range of about 1-6.5 feet. The Temperature Tablet, which holds up to 20,000 faces, can integrate with your access control system to allow access to restricted areas. The unit can detect if a person is wearing a mask and will instruct them to put on a mask before allowing access. And the ability to notify individuals with additional integrated messages.

This device will work effectively in many scenarios where there are limited amounts of people passing through that need to be scanned. For example, offices and buildings are a great option to utilize this device. Give access to select people at certain times while making sure that their temperature is within a safe range.

SPECIFICATIONS

Performance	
OS	Embedded Linux
Storage	8Gb DDR3 +16GB EMMC
Screen	
Display Screen	8inch LCD screen; resolution: 1280x800; contrast: 500:1
Brightness	500 lux
Control Interface	I2C
Temperature Measurement	
Temperature Measuring Range	89.6°~109.4° F (32°~43°C)
Accuracy	± (.54°F) 0.3°C
Measuring Distance	1Ft (0.3m)
Face Recognition	
Sensor	1/2.7
Lens	2MP dual-lens, f=3.97mm @ F1.6
Lens Mount	M12
WDR	120db
Height Range of Face Recognition	3.93-7.21Ft (1.2m-2.2m) (the recommended installation height is 4.75ft/1.45m)
Face Recognition Distance	0.98-6.56Ft (0.3m-2m)
Recognition Mode	Face: 1 : N
Recognition Duration	≤ 0.5 s per person
Face Capacity	20,000
Recognition Accuracy	99.70%
Supplementary Light	
Fill-in Light	Soft white light, IR light
White Light Distance	3.28-9.84Ft (1-3m)
Smart Linkage	
Screen Wakeup	Yes
Light Adjustment	Yes
Snapshot	Yes
Audio	
Two-way Talk	Yes (noise reduction and echo cancellation)
Audio Input	1CH built-in MIC
Audio Output	Built-in speaker
Interface	
Network Interface	10/100Mbps self-adaptive Ethernet port x1
Alarm Input	2CH
Alarm Output	2 CH
Wiegand Interface	Wiegand input/output : 26/34 :
RS485	RS485x1 (half duplex)
Door Lock Output	Relay output, NO/NC(optional), delay setting supported
SD Card Interface	1 micro SD card slot, up to 128G
USB Interface	USB x1
Anti-Tamper Interface	1 button
Exit Button	1
Reset Button	1

Others	
Power	12v@2.5A
Power Management	Screen sleep, screen protection
Power Consumption	<12W
Weight	Approx. 1.2KG
Installation	Wall Mounting : Pole Mounting, Embedded Installation, Desktop
Protection	Surge Protection and Voltage Transient Protection
Certificate	CE, FCC
Environment Protection	Complies with Directive EU RoHS, WEEE(2012/19/EU) , directive 94/62/EC and REACH(EC1907/2006)
Working Environment	32°F~104F (0°C~40°C) : <95% (non-condensing)
Dimensions(mm)	11.88x5.45x1.34 In (301.8x138.6x34.2mm)



Contact Us At Sales@lakebusiness.com

Or Call Us at 440.953.1199

lakebusiness.com